

Disaster City Gas Explosion

Player Briefing

February 17-19, 2023

College Station, Texas
101 Gateway Blvd
College Station, TX 77845



Welcome

- FEMA US&R Exercise Staff
 - Introductions
 - Positions

- FEMA US&R IST – RED
 - Brandon Webb, ISTL
 - Jeff Rouse, ISTDL
 - Roster Changes



Agenda

- Welcome
- Timeline
- Exercise Format & Scenario
 - Full-Scale
- Expectations and Atmosphere
- Evaluation of Exercise / Process
 - Coach / Mentor



Purpose

The purpose of the Player Briefing is to address individual roles and responsibilities, rules of engagement, expected play, exercise parameters, safety, security, and any remaining logistical exercise concerns or questions



EXERCISE OVERVIEW

IST – RED

FULL-SCALE



Exercise Overview

- Full-Scale Exercise (*Operational*)
 - *On-Site Operations*
 - *Coach – Mentor / No evaluations*
 - *Demobilization/After Action Process*



Exercise Scope

- FSE exercise planned for two days at TX-TF1 Gateway Center and Disaster City. This exercise emphasizes US&R specific onsite incident management and interoperability of the FEMA Incident Support Team (IST), FEMA US&R team, SAR resources and other federal, state and local force multipliers and support organizations during a no-notice event.



Objectives and Core Capabilities

- **Primary IST Exercise Objectives:**
 - Mobilization of Personnel
 - Arrival and Information Gathering
 - Team Integration w/IMT-AHJ
 - Communication of Situation to AHJ / Senior Leadership
 - Onsite Operations / Resource Management
 - Demobilization/AAR



Objectives and Core Capabilities

- **Core Capabilities**
 - Operational Coordination
 - Situational Assessment
 - Search & Rescue Operations
 - Operational Communications



Exercise Participants

- Players
- Coaches
- Mentors
- Simulators / Role Players
- Support staff



Exercise Play

- Exercise play will be on February 18-19, 2023
- Exercise play will take place at Disaster City and Gateway Center
- Play will be restricted to the delineated classroom areas, and Disaster City identified by the IST Leaders – Coach/Mentors.
- Field play is specific to the areas identified by IST Ops and TX-TF1 Staff.



Exercise Assumptions

- The exercise will be conducted in a no-fault learning environment wherein systems and processes, not individuals, will be evaluated. It is hopeful that individuals will find this exercise a learning environment that will support their position on the IST
- The exercise scenario is plausible and built around the gas explosion and other events, and results occur as they are presented
- Exercise materials and communication with exercise simulators will be realistic and plausible, and will contain sufficient detail from which players can respond
- Not all participants will have direct contact with injects, these participants should engage with members of the IST who support their mission



Exercise Artificialities

- Exercise communication and coordination is limited to the RED IST Players and the Exercise Coach/Mentor, Simulators, and the SimCell
- Only communication methods listed in the Communications Directory are available for players to use during the exercise
- Please use all means to obtain information electronically about your response area and how to support operations



Schedule

Friday, February 17

DAY 1

- *White IST Travel Day* 0700
- *Mentor / Coach Information Review* 1700
- *Arrival IST Cache* TBD
- *IST Establish Work Area - Gateway* TBD



Schedule

Saturday, February 18

DAY 2

- *White IST Player Brief* 0800
- *IST Workspace Set-up / Disaster City* 1000
- *IST Full-Scale Start (FS)* 1000
- *End Day 2* 0000



Schedule

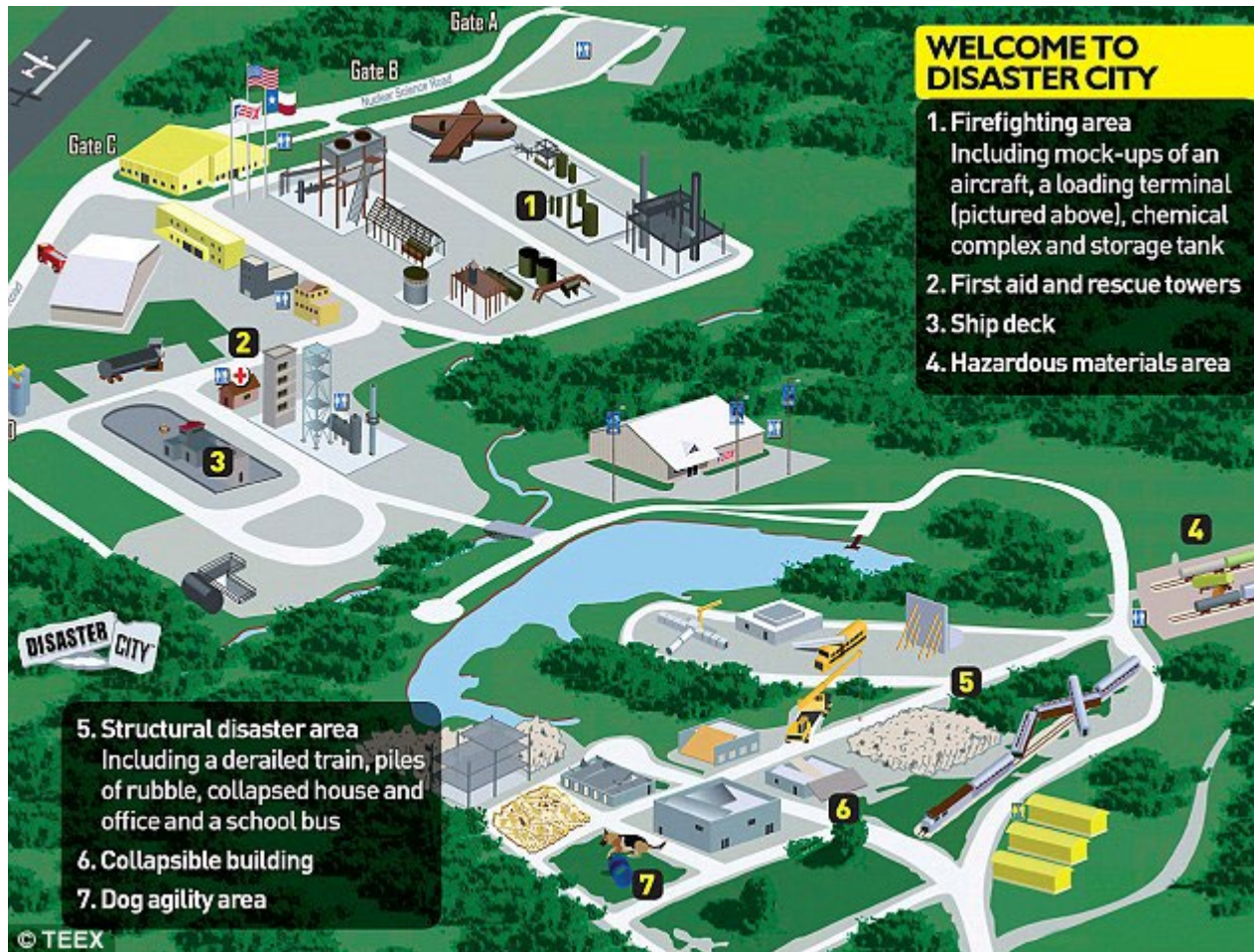
Sunday, February 19

DAY 3

- *White IST Operational Briefing Ops 2* 0700
- *Continue F/E Demobilization Plan* 0900
- *ENDEX* 1900



MAP



SAFETY AND SECURITY



National US&R Response System
Operational Readiness Exercise & Evaluation Program

Visual 1.18
US&R

Safety and Health

- Safety is everyone's concern
 - Safety concerns override exercise execution
 - Alert the nearest Coach / Mentor if you have safety or health concerns
- The safety officer for this exercise is any Coach / Mentor
- Actual emergencies will be identified by saying [**“This is a real emergency”**]
- Report any illness or safety related issues
- Be aware that operating or viewing outside during the operations-based exercise is inherently dangerous, when viewing the training ground full PPE is required.



Security

- Only authorized persons are allowed in the exercise area
 - Unauthorized persons are to be escorted out of the exercise play area or notify Coach / Mentor.



PLAYER ROLES AND RESPONSIBILITIES



National US&R Response System
Operational Readiness Exercise & Evaluation Program

Visual 1.21
US&R

Conduct of the Exercise

- Exercise Play is isolated to the Gateway Center and Disaster City
- There are follow-up exercise injects or injects to drive specific play, this will be used to solicit specific tasks needed to drive the expected outcome or to align exercise play
- Subsequent player actions are self-directed
- Scenario timeline is constant
- Changes in the timeline or exercise play will be communicated to the Players



Player Roles During the Exercise

- Conduct operations as normally as possible
- Complete tasks in their entirety, ask for assistance if needed



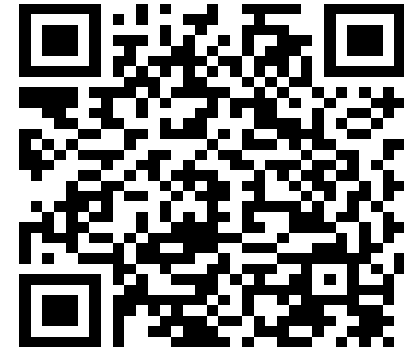
Player Roles After the Exercise

AAR Submittal

Please go to the following URL or via QR code and complete the requested AAR Survey.

Or

https://responsesystem.formstack.com/forms/usar_system_rapid_aar_form



- Participate in the After-Action Process
- Complete and submit your Participant Feedback Form by clicking the link:
- Provide copies of all logs, notes, and other documentation to the Coach / Mentor
- Follow exercise timeline and complete all tasks assigned to you



Briefings and Events

- After Action Process begins: TBD
- Coach and Mentor Debriefing: TBD
- After-Action Meeting: TBD



COMMUNICATIONS



Player Communications

- All exercise communications begin and end with the statement: [**“This is an exercise”**]
- Any communications intended for non-playing organizations are directed to the SimCell
- In the event of a real emergency, say [**“This is a real-world emergency”**]



Observers and Media

- Observers-VIPs will be escorted
- Observers-VIPs should not interfere with play
- Media personnel should not talk to players without permission from the Coach / Mentors and your ISTL
- See TX-TF1 Staff for assistance



Questions?

